

AVIATION BOATSWAIN'S MATE (AIRCRAFT HANDLING) (ABH) TABLE OF CONTENTS

SCOPE OF RATING	AB-3(H)
GENERAL INFORMATION	AB-4(H)
AIRCRAFT DIRECTOR	AB-5(H)
AIRCRAFT FIREFIGHTING/CRASH AND SALVAGE	AB-5(H)
SHIPBOARD/SHORE STATION AIRCRAFT HANDLING	AB-5(H)
SHIPBOARD/SHORE STATION MAINTENANCE	AB-11(H)
CRASH AND SALVAGE FIRE FIGHTER	AB-12(H)
AIRCRAFT FIREFIGHTING/CRASH AND SALVAGE	AB-12(H)
SHIPBOARD/SHORE STATION AIRCRAFT HANDLING	AB-15(H)
SHIPBOARD/SHORE STATION MAINTENANCE	AB-16(H)
AIR OPERATIONS TECHNICIAN	AB-17(H)
AIRCRAFT FIREFIGHTING/CRASH AND SALVAGE	AB-17(H)
SHIPBOARD/SHORE STATION AIRCRAFT HANDLING	AB-17(H)
SHIPBOARD/SHORE STATION MAINTENANCE	AB-17(H)

NAVY ENLISTED OCCUPATIONAL STANDARD
FOR
AVIATION BOATSWAIN'S MATE (AIRCRAFT HANDLING) (ABH)



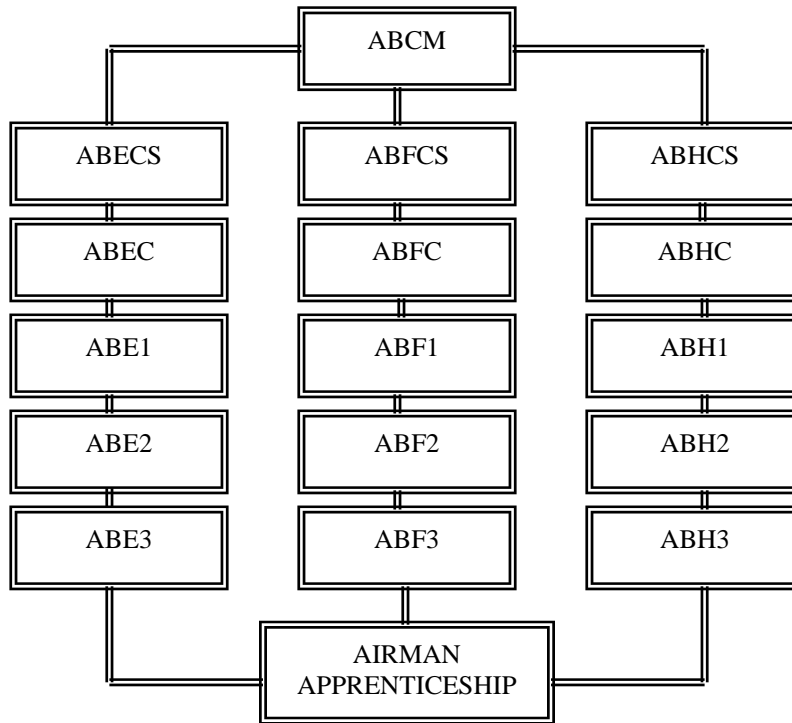
SCOPE OF RATING

Aviation Boatswain's Mates (AB) operate, maintain, and perform organizational maintenance on catapults, arresting gear, barricades, and associated flightdeck launching and recovery equipment; operate and service aircraft ground-handling equipment and machinery; operate and service aircraft crash, firefighting, and rescue equipment; handle aircraft afloat and ashore; operate, maintain, and repair aviation fueling, defueling, lubricating oil, and inert gas systems; perform crash rescue, firefighting, crash removal, and damage control duties.

Aviation Boatswain's Mates (Aircraft Handling) (ABH) direct the movement and spotting of aircraft ashore and afloat; operate, maintain, and perform organizational maintenance on ground-handling equipment used for moving and hoisting of aircraft ashore and afloat; supervise securing of aircraft and equipment; perform crash rescue, firefighting, crash removal, and damage control duties; perform duties in connection with launching and recovery of aircraft.

This Occupational Standard is to be incorporated in Volume I, Part B, of the Manual of Navy Enlisted Manpower and Personnel Classifications and Occupational Standards (NAVPERS 18068F) in Chapter 1.

**GENERAL INFORMATION
CAREER PATTERN**



Normal path of advancement to Chief Warrant Officer and Limited Duty Officer categories can be found in OPNAVINST 1420.1.

For rating entry requirements, refer to MILPERSMAN 1306-618.

SAFETY

The observance of proper safety precautions in all areas is an integral part of each billet and the responsibility of every Sailor; therefore, it is a universal requirement for all ratings.

Job Title**Aircraft Director****Job Code****001195****Job Family**

Protective Service

NOC

3300-1021.00

Short Title (30 Characters)

AIRCRAFT DIRECTOR

Short Title (10 Characters)

AIR DIR

Pay Plan

Enlisted

Career Field

ABH

Proficiency Level

A/J/M

Other Relationships and Rules:

None

Job Description

Aircraft Directors are responsible for the safe and expeditious movement of aircraft on flight decks, hangar decks, and ashore which includes the installation and removal of chocks, tie downs, and tow bars. Duties include operating tractors, elevators, and conflagration stations, ouija board spotters, and designated lookouts. Job requirements include a strong working knowledge of the Planned Maintenance System (PMS), deck multiple/density, aircraft fundamentals/systems and flight/hangar deck operations. Responsible for administrative duties, training initiatives, technical publication libraries, operational readiness of equipment, and upkeep of divisional spaces.

DoD RelationshipTitle and Group:

Aircraft Launch Equipment

160

Code and Area:

160400

16

O*NET RelationshipTitle and SOC Code:

First-Line Supervisors/Managers of
Fire Fighting and Prevention Workers
33-1021.00

Name and Family Code:

Protective Service

33

AIRCRAFT FIREFIGHTING/CRASH AND SALVAGE**Paygrade****Task Type****Task Statements****Skills****Abilities**

E4

CORE

Execute hangar deck fire drills

*Active Listening**Multi-limb Coordination**Judgment and Decision Making**Information Ordering*

E4

CORE

Man variable position nozzles and hose control devices (1 1/2", 2 1/2" diameter)

*Active Listening**Dynamic Strength**Judgment and Decision Making**Visualization*

E4

CORE

Operate variable position nozzles and hose control devices (1 1/2", 2 1/2" diameter)

*Coordination**Dynamic Flexibility**Operation and Control**Dynamic Strength*

E4

CORE

Operate aircraft firefighting equipment in hangar decks

*Equipment Selection**Information Ordering**Operation and Control**Visualization*

E4

CORE

Operate aircraft firefighting equipment on flight decks

*Equipment Selection**Information Ordering**Operation and Control**Visualization*

E4

CORE

Perform conflagration station operations

*Equipment Selection**Visualization**Judgment and Decision Making**Deductive Reasoning*

E4

CORE

Perform flight deck aircraft firefighting procedures

*Complex Problem Solving**Visualization**Judgment and Decision Making**Deductive Reasoning*

E4

CORE

Perform hangar bay aircraft firefighting procedures

*Complex Problem Solving**Deductive Reasoning**Judgment and Decision Making**Visualization***SHIPBOARD/SHORE STATION AIRCRAFT HANDLING****Paygrade**

E7

Task Type

CORE

Task Statements

Account for multiple density of flight deck (F/A-18, EA-6B, E-2C, P-25, Carrier Crash Crane (CVCC), Amphibious Crash Crane (ACC), etc.)

*Complex Problem Solving**Visualization**Coordination**Fluency of Ideas*

E4

CORE

Attach tow bars from tractors

*Coordination**Static Strength**Installation**Multi-limb Coordination*

AB-5(H)

E4	CORE	Calculate elevator loads	<i>Judgment and Decision Making</i> <i>Mathematics</i>	<i>Inductive Reasoning</i> <i>Information Ordering</i>
E7	CORE	Calculate sea states	<i>Complex Problem Solving</i> <i>Judgment and Decision Making</i>	<i>Inductive Reasoning</i> <i>Information Ordering</i>
E4	CORE	Chock aircraft with rotors (H-60, H-53, etc.)	<i>Coordination</i> <i>Installation</i>	<i>Explosive Strength</i> <i>Extent Flexibility</i>
E4	CORE	Complete damage/crunch reports	<i>Quality Control Analysis</i> <i>Writing</i>	<i>Written Comprehension</i> <i>Written Expression</i>
E5	CORE	Conduct Air Department Training Team (ADTT) procedures	<i>Instructing</i> <i>Monitoring</i>	<i>Information Ordering</i> <i>Inductive Reasoning</i>
E4	CORE	Conduct aircraft handling support equipment (spotting dolly, tow tractor, Mobile Electric Power Plant (MEPP-3)) daily inspections	<i>Equipment Maintenance</i> <i>Operation Monitoring</i>	<i>Information Ordering</i> <i>Written Comprehension</i>
E6	CORE	Conduct deck caller procedures during flight deck operations	<i>Complex Problem Solving</i> <i>Coordination</i>	<i>Inductive Reasoning</i> <i>Information Ordering</i>
E6	CORE	Conduct flight deck personnel respot briefings	<i>Coordination</i> <i>Instructing</i>	<i>Speech Clarity</i> <i>Oral Expression</i>
E4	CORE	Conduct flight deck post-flight checks	<i>Judgment and Decision Making</i> <i>Quality Control Analysis</i>	<i>Information Ordering</i> <i>Visualization</i>
E4	CORE	Conduct flight deck pre-flight checks	<i>Judgment and Decision Making</i> <i>Management of Material Resources</i>	<i>Visualization</i> <i>Information Ordering</i>
E5	CORE	Conduct flight deck safety training	<i>Instructing</i> <i>Learning Strategies</i>	<i>Oral Expression</i> <i>Speech Clarity</i>
E4	CORE	Conduct Foreign Object Debris (FOD) walkdowns	<i>Coordination</i> <i>Management of Personnel Resources</i>	<i>Peripheral Vision</i> <i>Spatial Orientation</i>
E4	CORE	Conduct hangar deck post-flight checks	<i>Judgment and Decision Making</i> <i>Quality Control Analysis</i>	<i>Visualization</i> <i>Information Ordering</i>
E4	CORE	Conduct hangar deck pre-flight checks	<i>Judgment and Decision Making</i> <i>Quality Control Analysis</i>	<i>Visualization</i> <i>Information Ordering</i>
E5	CORE	Conduct hangar deck safety training	<i>Instructing</i> <i>Learning Strategies</i>	<i>Oral Expression</i> <i>Speech Clarity</i>
E4	CORE	Conduct hot chockman procedures	<i>Critical Thinking</i> <i>Judgment and Decision Making</i>	<i>Information Ordering</i> <i>Multi-limb Coordination</i>
E4	CORE	Conduct aircraft handling support equipment (spotting dolly, tow tractor, Mobile Electric Power Plant (MEPP-3)) post-operational checks	<i>Equipment Selection</i> <i>Operation Monitoring</i>	<i>Information Ordering</i> <i>Written Comprehension</i>
E4	CORE	Conduct post-operational inspections of the flight decks	<i>Judgment and Decision Making</i> <i>Quality Control Analysis</i>	<i>Written Comprehension</i> <i>Information Ordering</i>

E4	CORE	Conduct post-operational inspections of the hanger decks <i>Judgment and Decision Making</i> <i>Quality Control Analysis</i>	<i>Written Comprehension</i> <i>Information Ordering</i>
E4	CORE	Conduct pre-operational inspections of the flight decks <i>Judgment and Decision Making</i> <i>Quality Control Analysis</i>	<i>Written Comprehension</i> <i>Information Ordering</i>
E4	CORE	Conduct pre-operational inspections of the hanger decks <i>Judgment and Decision Making</i> <i>Quality Control Analysis</i>	<i>Written Comprehension</i> <i>Information Ordering</i>
E4	CORE	Coordinate aircraft respots via air plans <i>Complex Problem Solving</i> <i>Coordination</i>	<i>Information Ordering</i> <i>Written Comprehension</i>
E4	CORE	Coordinate launch evolutions in fly 1 areas <i>Complex Problem Solving</i> <i>Coordination</i>	<i>Visualization</i> <i>Oral Expression</i>
E4	CORE	Coordinate launch evolutions in fly 2 areas <i>Complex Problem Solving</i> <i>Coordination</i>	<i>Visualization</i> <i>Oral Expression</i>
E4	CORE	Coordinate launch evolutions in fly 3 areas <i>Complex Problem Solving</i> <i>Coordination</i>	<i>Visualization</i> <i>Oral Expression</i>
E4	CORE	Coordinate liquid Foreign Object Debris (FOD) programs <i>Coordination</i> <i>Judgment and Decision Making</i>	<i>Oral Expression</i> <i>Visualization</i>
E4	CORE	Coordinate recovery evolutions in fly 1 areas <i>Complex Problem Solving</i> <i>Coordination</i>	<i>Information Ordering</i> <i>Written Comprehension</i>
E4	CORE	Coordinate recovery evolutions in fly 2 areas <i>Complex Problem Solving</i> <i>Coordination</i>	<i>Information Ordering</i> <i>Written Comprehension</i>
E4	CORE	Coordinate recovery evolutions in fly 3 areas <i>Complex Problem Solving</i> <i>Coordination</i>	<i>Information Ordering</i> <i>Written Comprehension</i>
E4	CORE	Coordinate respot evolutions (flight deck, hangar deck) <i>Coordination</i> <i>Management of Personnel Resources</i>	<i>Information Ordering</i> <i>Written Comprehension</i>
E4	CORE	Coordinate turning aircraft on the hangar deck <i>Coordination</i> <i>Judgment and Decision Making</i>	<i>Originality</i> <i>Problem Sensitivity</i>
E5	CORE	De-rig safety flag staffs <i>Coordination</i> <i>Judgment and Decision Making</i>	<i>Problem Sensitivity</i> <i>Static Strength</i>
E5	CORE	De-rig safety rails <i>Coordination</i> <i>Judgment and Decision Making</i>	<i>Problem Sensitivity</i> <i>Static Strength</i>
E4	CORE	Dispatch starting units positions for maintenance turns (tow tractors, Mobile Electric Power Plants (MEPP-3)) <i>Coordination</i> <i>Management of Personnel Resources</i>	<i>Oral Expression</i> <i>Spatial Orientation</i>
E4	CORE	Dispatch tow tractors and dollies for respots of aircraft <i>Coordination</i> <i>Management of Personnel Resources</i>	<i>Oral Expression</i> <i>Spatial Orientation</i>
E4	CORE	Execute barricade drills <i>Active Listening</i> <i>Operation and Control</i>	<i>Information Ordering</i> <i>Multi-limb Coordination</i>
E4	CORE	Execute fuel station fire drills (flight deck, hangar deck) <i>Active Listening</i> <i>Judgment and Decision Making</i>	<i>Multi-limb Coordination</i> <i>Information Ordering</i>

E4	CORE	Hookup boat skids (Admiral's Barge, Captain's Gig) <i>Coordination</i> <i>Installation</i>	<i>Manual Dexterity</i> <i>Multi-limb Coordination</i>
E4	CORE	Identify primary mooring points (F/A-18, EA-6B, E-2C, etc.) <i>Equipment Selection</i> <i>Judgment and Decision Making</i>	<i>Memorization</i> <i>Information Ordering</i>
E4	CORE	Install aircraft chains (F/A-18, EA-6B, E-2C, etc.) <i>Equipment Selection</i> <i>Installation</i>	<i>Multi-limb Coordination</i> <i>Manual Dexterity</i>
E4	CORE	Install aircraft chocks (F/A-18, EA-6B, E-2C, etc.) <i>Equipment Selection</i> <i>Installation</i>	<i>Multi-limb Coordination</i> <i>Manual Dexterity</i>
E4	CORE	Install aircraft tow bars (F/A-18, EA-6B, E-2C, etc.) <i>Equipment Selection</i> <i>Installation</i>	<i>Multi-limb Coordination</i> <i>Manual Dexterity</i>
E4	CORE	Install barricade ramps <i>Coordination</i> <i>Installation</i>	<i>Multi-limb Coordination</i> <i>Manual Dexterity</i>
E4	CORE	Interpret audio signals (flight deck, hangar deck) <i>Complex Problem Solving</i> <i>Judgment and Decision Making</i>	<i>Sound Localization</i> <i>Oral Comprehension</i>
E4	CORE	Interpret visual signals (flight deck, hangar deck) <i>Complex Problem Solving</i> <i>Judgment and Decision Making</i>	<i>Response Orientation</i> <i>Memorization</i>
E4	CORE	Maintain conflagration station watch logs <i>Judgment and Decision Making</i> <i>Writing</i>	<i>Written Comprehension</i> <i>Written Expression</i>
E4	CORE	Manage liquid Foreign Object Debris (FOD) programs <i>Coordination</i> <i>Monitoring</i>	<i>Inductive Reasoning</i> <i>Visualization</i>
E4	CORE	Manually release spotting dolly lifting arms from aircraft <i>Coordination</i> <i>Judgment and Decision Making</i>	<i>Visualization</i> <i>Inductive Reasoning</i>
E4	CORE	Monitor aircraft handling support equipment (spotting dolly, tow tractor, Mobile Electric Power Plant (MEPP-3)) maintenance and service requirements <i>Monitoring</i> <i>Operation Monitoring</i>	<i>Written Comprehension</i> <i>Visualization</i>
E4	CORE	Monitor starting units positions for maintenance turns (tow tractor, Mobile Electric Power Plant (MEPP-3)) <i>Monitoring</i> <i>Operation Monitoring</i>	<i>Written Comprehension</i> <i>Visualization</i>
E4	CORE	Move boat skids (Admiral's Barge, Captain's Gig) <i>Coordination</i> <i>Judgment and Decision Making</i>	<i>Static Strength</i> <i>Peripheral Vision</i>
E4	CORE	Move no-brake aircraft <i>Complex Problem Solving</i> <i>Coordination</i>	<i>Peripheral Vision</i> <i>Wrist-Finger Speed</i>
E4	CORE	Observe aircraft elevator operations from machinery room <i>Monitoring</i> <i>Operation Monitoring</i>	<i>Visualization</i> <i>Selective Attention</i>
E4	CORE	Operate aircraft elevators in normal mode <i>Coordination</i> <i>Operation and Control</i>	<i>Visualization</i> <i>Information Ordering</i>
E4	CORE	Operate aircraft elevators through lower and raise cycles in manual mode <i>Coordination</i> <i>Judgment and Decision Making</i>	<i>Information Ordering</i> <i>Visualization</i>
E4	CORE	Operate ballistic doors <i>Equipment Selection</i> <i>Operation and Control</i>	<i>Information Ordering</i> <i>Visualization</i>

E4	CORE	Operate mobile support equipment <i>Judgment and Decision Making</i> <i>Operation and Control</i>	<i>Multi-limb Coordination</i> <i>Manual Dexterity</i>
E4	CORE	Operate safety stanchions (flight deck, hangar deck) <i>Judgment and Decision Making</i> <i>Operation and Control</i>	<i>Multi-limb Coordination</i> <i>Manual Dexterity</i>
E4	CORE	Operate spotting boards (Ouija/templates) using aircraft spotting phraseology (flight deck, hangar deck) <i>Active Listening</i> <i>Judgment and Decision Making</i>	<i>Finger Dexterity</i> <i>Wrist-Finger Speed</i>
E4	CORE	Perform aircraft flight deck services (electrical, air start power) <i>Equipment Selection</i> <i>Operation and Control</i>	<i>Deductive Reasoning</i> <i>Visualization</i>
E4	CORE	Perform Aircraft Handling Officer (AHO) duties during flight operations <i>Complex Problem Solving</i> <i>Coordination</i>	<i>Deductive Reasoning</i> <i>Visualization</i>
E4	CORE	Perform aircraft hangar deck services (electrical, air start power) <i>Equipment Selection</i> <i>Operation and Control</i>	<i>Deductive Reasoning</i> <i>Visualization</i>
E4	CORE	Perform aircraft hydraulic failure emergency procedures <i>Complex Problem Solving</i> <i>Judgment and Decision Making</i>	<i>Deductive Reasoning</i> <i>Visualization</i>
E4	CORE	Perform aircraft safety observer procedures <i>Judgment and Decision Making</i> <i>Monitoring</i>	<i>Deductive Reasoning</i> <i>Visualization</i>
E4	CORE	Perform airfield support operations <i>Coordination</i> <i>Judgment and Decision Making</i>	<i>Deductive Reasoning</i> <i>Visualization</i>
E4	CORE	Perform chock walker procedures for aircraft (F/A-18, EA-6B, E-2C, C-2, etc.) <i>Equipment Selection</i> <i>Judgment and Decision Making</i>	<i>Deductive Reasoning</i> <i>Visualization</i>
E4	CORE	Perform flight deck aircraft movements <i>Coordination</i> <i>Judgment and Decision Making</i>	<i>Deductive Reasoning</i> <i>Visualization</i>
E4	CORE	Perform flight deck elevator operations <i>Coordination</i> <i>Operation and Control</i>	<i>Deductive Reasoning</i> <i>Visualization</i>
E4	CORE	Perform hangar deck aircraft movements <i>Coordination</i> <i>Judgment and Decision Making</i>	<i>Deductive Reasoning</i> <i>Visualization</i>
E4	CORE	Perform hangar deck elevator operations <i>Coordination</i> <i>Operation and Control</i>	<i>Information Ordering</i> <i>Visualization</i>
E5	CORE	Perform launch respots <i>Complex Problem Solving</i> <i>Coordination</i>	<i>Information Ordering</i> <i>Visualization</i>
E5	CORE	Perform maintenance respots <i>Coordination</i> <i>Judgment and Decision Making</i>	<i>Information Ordering</i> <i>Visualization</i>
E4	CORE	Perform no-brake aircraft emergency procedures <i>Complex Problem Solving</i> <i>Judgment and Decision Making</i>	<i>Visualization</i> <i>Information Ordering</i>
E5	CORE	Perform recovery respots <i>Complex Problem Solving</i> <i>Judgment and Decision Making</i>	<i>Information Ordering</i> <i>Visualization</i>
E5	CORE	Provide aircraft (F/A-18, EA-6B, E-2C, etc.) electrical service via Mobile Electric Power Plants (MEPP-3) <i>Equipment Selection</i> <i>Operation and Control</i>	<i>Information Ordering</i> <i>Inductive Reasoning</i>

E5	CORE	Provide start air to aircraft (EA-6B, E-2C, F/A-18, etc.)	<i>Equipment Selection</i> <i>Operation and Control</i>	<i>Information Ordering</i> <i>Inductive Reasoning</i>
E4	CORE	Release tow bars from tractors	<i>Coordination</i> <i>Judgment and Decision Making</i>	<i>Deductive Reasoning</i> <i>Dynamic Flexibility</i>
E4	CORE	Remove barricade ramps	<i>Equipment Selection</i> <i>Judgment and Decision Making</i>	<i>Information Ordering</i> <i>Dynamic Flexibility</i>
E4	CORE	Respond to audio signals (flight deck, hanger deck)	<i>Complex Problem Solving</i> <i>Judgment and Decision Making</i>	<i>Auditory Attention</i> <i>Deductive Reasoning</i>
E4	CORE	Respond to visual signals (flight deck, hangar deck)	<i>Complex Problem Solving</i> <i>Judgment and Decision Making</i>	<i>Auditory Attention</i> <i>Deductive Reasoning</i>
E5	CORE	Rig aircraft jettison stations	<i>Complex Problem Solving</i> <i>Judgment and Decision Making</i>	<i>Multi-limb Coordination</i> <i>Static Strength</i>
E5	CORE	Rig safety flag staffs	<i>Equipment Selection</i> <i>Installation</i>	<i>Multi-limb Coordination</i> <i>Static Strength</i>
E5	CORE	Rig safety rails	<i>Equipment Selection</i> <i>Installation</i>	<i>Multi-limb Coordination</i> <i>Static Strength</i>
E5	CORE	Secure aircraft handling equipment (chocks, chains, tow bars)	<i>Equipment Selection</i> <i>Judgment and Decision Making</i>	<i>Multi-limb Coordination</i> <i>Static Strength</i>
E4	CORE	Secure aircraft handling support equipment (spotting dollies, tow tractors, Mobile Electric Power Plants (MEPP-3))	<i>Equipment Selection</i> <i>Installation</i>	<i>Wrist-Finger Speed</i> <i>Depth Perception</i>
E5	CORE	Stow aircraft handling equipment (chocks, chains, tow bars)	<i>Equipment Selection</i> <i>Judgment and Decision Making</i>	<i>Static Strength</i> <i>Multi-limb Coordination</i>
E4	CORE	Stow barricade ramps	<i>Equipment Selection</i> <i>Judgment and Decision Making</i>	<i>Static Strength</i> <i>Multi-limb Coordination</i>
E5	CORE	Stow safety flag staffs	<i>Equipment Selection</i> <i>Judgment and Decision Making</i>	<i>Static Strength</i> <i>Multi-limb Coordination</i>
E5	CORE	Stow safety rails	<i>Equipment Selection</i> <i>Judgment and Decision Making</i>	<i>Static Strength</i> <i>Multi-limb Coordination</i>
E5	CORE	Supervise aircraft traffic during recovery operations	<i>Monitoring</i> <i>Operation Monitoring</i>	<i>Originality</i> <i>Visualization</i>
E5	CORE	Supervise daily post-operational checks of aircraft handling support equipment (spotting dolly, tow tractor, Mobile Electric Power Plant (MEPP-3))	<i>Monitoring</i> <i>Operation Monitoring</i>	<i>Originality</i> <i>Visualization</i>
E5	CORE	Supervise daily pre-operational checks of aircraft handling support equipment (spotting dolly, tow tractor, Mobile Electric Power Plant (MEPP-3))	<i>Monitoring</i> <i>Operation Monitoring</i>	<i>Originality</i> <i>Visualization</i>
E7	CORE	Supervise flight deck operations	<i>Monitoring</i> <i>Operation Monitoring</i>	<i>Originality</i> <i>Visualization</i>

E6	CORE	Supervise Foreign Object Debris (FOD) walk downs	<i>Monitoring</i>	<i>Originality</i>
			<i>Operation Monitoring</i>	<i>Visualization</i>
E6	CORE	Supervise liquid Foreign Object Debris (FOD) program	<i>Monitoring</i>	<i>Originality</i>
			<i>Operation Monitoring</i>	<i>Visualization</i>
E6	CORE	Supervise post-operation of aircraft handling support equipment (spotting dolly, tow tractor, Mobile Electric Power Plant (MEPP-3))	<i>Monitoring</i>	<i>Originality</i>
			<i>Operation Monitoring</i>	<i>Visualization</i>
E6	CORE	Supervise securing of aircraft handling support equipment (spotting dolly, tow tractor, Mobile Electric Power Plant (MEPP-3))	<i>Monitoring</i>	<i>Originality</i>
			<i>Operation Monitoring</i>	<i>Visualization</i>
E4	CORE	Supervise turning aircraft on the hangar decks	<i>Monitoring</i>	<i>Originality</i>
			<i>Operation Monitoring</i>	<i>Visualization</i>
E4	CORE	Support respot briefs (flight deck, hangar deck)	<i>Active Learning</i>	<i>Information Ordering</i>
			<i>Active Listening</i>	<i>Inductive Reasoning</i>
E4	CORE	Tie down aircraft with rotors (H-60, H-53, etc.)	<i>Coordination</i>	<i>Information Ordering</i>
			<i>Installation</i>	<i>Multi-limb Coordination</i>
E7	CORE	Visually inspect aircraft elevator platforms (flight deck, hangar deck)	<i>Judgment and Decision Making</i>	<i>Information Ordering</i>
			<i>Quality Control Analysis</i>	<i>Problem Sensitivity</i>
E7	CORE	Visually inspect coamings (flight deck, hangar deck)	<i>Judgment and Decision Making</i>	<i>Information Ordering</i>
			<i>Quality Control Analysis</i>	<i>Problem Sensitivity</i>
E7	CORE	Visually inspect safety nets (flight deck, hangar deck)	<i>Judgment and Decision Making</i>	<i>Information Ordering</i>
			<i>Quality Control Analysis</i>	<i>Problem Sensitivity</i>

SHIPBOARD/SHORE STATIONS MAINTENANCE

<u>Pavgrade</u>	<u>Task Type</u>	<u>Task Statements</u>	<u>Skills</u>	<u>Abilities</u>
E5	CORE	Conduct non-skid Quality Assurance Inspector (QAI) procedures	<i>Management of Material Resources</i>	<i>Information Ordering</i>
			<i>Mathematics</i>	<i>Inductive Reasoning</i>
E5	CORE	Input Organizational Maintenance and Material System - New Generation (OMMS-NG) action work	<i>Equipment Maintenance</i>	<i>Finger Dexterity</i>
			<i>Judgment and Decision Making</i>	<i>Memorization</i>
E4	CORE	Perform deck preservation on hangar bays	<i>Complex Problem Solving</i>	<i>Deductive Reasoning</i>
			<i>Judgment and Decision Making</i>	<i>Visualization</i>
E4	CORE	Perform deck preservation on flight decks	<i>Complex Problem Solving</i>	<i>Deductive Reasoning</i>
			<i>Judgment and Decision Making</i>	<i>Visualization</i>

Job Title**Crash and Salvage Fire Fighter****Job Code****001250****Job Family**

Healthcare Practitioners and Technical

NOC

2900-2041.00

Short Title (30 Characters)

CRASH AND SALVAGE FIRE FIGHTER

Short Title (10 Characters)

CRASHSAL

Pav Plan

Enlisted

Career Field

ABH

Proficiency Level

A/J/M

Other Relationships and Rules:

7011

Job Description

Crash and Salvage Fire Fighters respond to aircraft emergencies, conduct firefighting, and perform proper rescue and salvage procedures for each type of aircraft carried. They also coordination of aircraft jettison operations, embarked squadron training, equipment maintenance requirements, and water related salvage operations.

DoD Relationship**Title and Group:**

Aircraft Launch Equipment

160

Code and Area:

160400

16

O*NET Relationship**Title and SOC Code:**Emergency Medical Technicians and Paramedics
29-2041.00**Name and Family Code:**Healthcare Practitioners and Technical
29**AIRCRAFT FIREFIGHTING/CRASH AND SALVAGE****Pavgrade**

E4

Task Type

CORE

Task Statements

Access aircraft ejection seats (F/A-18, EA-6B, E-2C, etc.)

SkillsComplex Problem Solving
Critical Thinking**Abilities**Information Ordering
Inductive Reasoning

E4

CORE

Access aircraft safety canopies (F/A-18, EA-6B, E-2C, etc.)

Complex Problem Solving
Judgment and Decision MakingInformation Ordering
Inductive Reasoning

E4

CORE

Attach aircraft hoisting slings and belly bands (F/A-18, EA-6B, E-2C, etc.)

Coordination
InstallationInductive Reasoning
Information Ordering

E4

CORE

Conduct emergency canopy jettison procedures (F/A-18, EA-6B, E-2C, etc.)

Judgment and Decision Making
Operation and ControlInformation Ordering
Inductive Reasoning

E7

CORE

Conduct fire chief procedures during airfield aircraft emergency operations

Complex Problem Solving
CoordinationAuditory Attention
Deductive Reasoning

E4

CORE

Conduct flight deck rescue procedures

Complex Problem Solving
CoordinationInformation Ordering
Multi-limb Coordination

E4

CORE

Conduct hangar deck rescue procedures

Complex Problem Solving
CoordinationInformation Ordering
Multi-limb Coordination

E4

CORE

Conduct post-operational checks of aircraft firefighting support equipment (P-25, Carrier Crash Crane (CVCC), Amphibious Crash Crane (ACC), etc.)

Equipment Maintenance
Operation MonitoringInformation Ordering
Written Comprehension

E6

CORE

Conduct rig master procedures during salvage operations

Coordination
Management of Personnel ResourcesInformation Ordering
Written Comprehension

E4

CORE

Secure aircraft firefighting support equipment (P-25, Carrier Crash Crane (CVCC), Amphibious Crash Crane (ACC), etc.)

Equipment Selection
InstallationWrist-Finger Speed
Depth Perception

E4

CORE

Determine maximum hoisting weight (F/A-18, EA-6B, E-2C, etc.)

Complex Problem Solving
MathematicsMathematical Reasoning
Written Comprehension

AB-12(H)

E4	CORE	Don firefighting Personal Protective Equipment (PPE) (proximity/hot suits, Self-Contained Breathing Apparatus (SCBA))	<i>Equipment Selection</i> <i>Judgment and Decision Making</i>	<i>Information Ordering</i> <i>Multi-limb Coordination</i>
E4	CORE	Execute hangar deck fire drills	<i>Active Listening</i> <i>Judgment and Decision Making</i>	<i>Multi-limb Coordination</i> <i>Information Ordering</i>
E4	CORE	Identify location of composite materials (F/A-18, EA-6B, E-2C, etc.)	<i>Complex Problem Solving</i> <i>Judgment and Decision Making</i>	<i>Information Ordering</i> <i>Memorization</i>
E4	CORE	Install aircraft down locks (F/A-18, EA-6B, E-2C, etc.)	<i>Equipment Selection</i> <i>Installation</i>	<i>Information Ordering</i> <i>Manual Dexterity</i>
E4	CORE	Install stabilizing lines for aircraft hoisting	<i>Coordination</i> <i>Installation</i>	<i>Multi-limb Coordination</i> <i>Manual Dexterity</i>
E4	CORE	Install tow bars on crash dollies	<i>Coordination</i> <i>Installation</i>	<i>Multi-limb Coordination</i> <i>Manual Dexterity</i>
E4	CORE	Locate battery and Liquid Oxygen (LOX) compartments (F/A-18, EA-6B, E-2C, etc.)	<i>Complex Problem Solving</i> <i>Equipment Selection</i>	<i>Finger Dexterity</i> <i>Memorization</i>
E4	CORE	Maintain flight deck aircraft rescue and salvage equipment	<i>Equipment Maintenance</i> <i>Management of Material Resources</i>	<i>Written Comprehension</i> <i>Visualization</i>
E4	CORE	Man variable position nozzles and hose control devices (1 1/2", 2 1/2" diameter)	<i>Active Listening</i> <i>Judgment and Decision Making</i>	<i>Dynamic Strength</i> <i>Visualization</i>
E4	CORE	Operate variable position nozzles and hose control devices (1 1/2", 2 1/2" diameter)	<i>Coordination</i> <i>Operation and Control</i>	<i>Dynamic Flexibility</i> <i>Dynamic Strength</i>
E5	CORE	Operate aircraft firefighting and salvage support equipment (P-25, Carrier Crash Crane (CVCC), Amphibious Crash Crane (ACC), etc.)	<i>Complex Problem Solving</i> <i>Operation and Control</i>	<i>Visualization</i> <i>Information Ordering</i>
E4	CORE	Operate aircraft firefighting equipment in hangar decks	<i>Equipment Selection</i> <i>Operation and Control</i>	<i>Information Ordering</i> <i>Visualization</i>
E4	CORE	Operate aircraft firefighting equipment on flight decks	<i>Equipment Selection</i> <i>Operation and Control</i>	<i>Information Ordering</i> <i>Visualization</i>
E4	CORE	Operate aircraft rescue equipment on flight decks	<i>Equipment Selection</i> <i>Operation and Control</i>	<i>Information Ordering</i> <i>Visualization</i>
E4	CORE	Operate aircraft salvage equipment on flight decks	<i>Equipment Selection</i> <i>Operation and Control</i>	<i>Information Ordering</i> <i>Visualization</i>
E4	CORE	Operate crash forklifts for aircrew rescues, collapsed nose gear incidents, and collapsed main mount incidents (F/A-18, EA-6B, E-2C, etc.)	<i>Judgment and Decision Making</i> <i>Operation and Control</i>	<i>Visualization</i> <i>Information Ordering</i>
E4	CORE	Operate taglines (F/A-18, EA-6B, E-2C, etc.)	<i>Active Listening</i> <i>Judgment and Decision Making</i>	<i>Dynamic Flexibility</i> <i>Visualization</i>
E4	CORE	Perform flight deck aircraft firefighting procedures	<i>Complex Problem Solving</i> <i>Judgment and Decision Making</i>	<i>Visualization</i> <i>Deductive Reasoning</i>

E4	CORE	Perform hangar bay aircraft firefighting procedures	<i>Complex Problem Solving</i>	<i>Deductive Reasoning</i>
			<i>Judgment and Decision Making</i>	<i>Visualization</i>
E4	CORE	Perform overhaul/residual fire checks (F/A-18, EA-6B, E-2C, etc.)	<i>Judgment and Decision Making</i>	<i>Information Ordering</i>
			<i>Quality Control Analysis</i>	<i>Visualization</i>
E4	CORE	Perform pre-operational check of Personal Protective Equipment (PPE) (proximity/hot suits, Self-Contained Breathing Apparatus (SCBA))	<i>Judgment and Decision Making</i>	<i>Visualization</i>
			<i>Quality Control Analysis</i>	<i>Deductive Reasoning</i>
E4	CORE	Position and secure crash dollies for collapsed main mounts (F/A-18, EA-6B, E-2C, etc.)	<i>Coordination</i>	<i>Information Ordering</i>
			<i>Installation</i>	<i>Dynamic Strength</i>
E4	CORE	Position and secure crash dollies for collapsed nose gear (F/A-18, EA-6B, E-2C, etc.)	<i>Coordination</i>	<i>Information Ordering</i>
			<i>Installation</i>	<i>Dynamic Strength</i>
E4	CORE	Position and secure crash dollies for sheared main mounts (F/A-18, EA-6B, E-2C, etc.)	<i>Coordination</i>	<i>Information Ordering</i>
			<i>Installation</i>	<i>Dynamic Strength</i>
E4	CORE	Position and secure crash dollies for sheared nose gear (F/A-18, EA-6B, E-2C, etc.)	<i>Coordination</i>	<i>Information Ordering</i>
			<i>Installation</i>	<i>Dynamic Strength</i>
E4	CORE	Position crash cranes (F/A-18, EA-6B, E-2C, etc.)	<i>Coordination</i>	<i>Inductive Reasoning</i>
			<i>Judgment and Decision Making</i>	<i>Information Ordering</i>
E5	CORE	Start aircraft firefighting and salvage support equipment (P-25, Carrier Crash Crane (CVCC), Amphibious Crash Crane (ACC), etc.)	<i>Judgment and Decision Making</i>	<i>Static Strength</i>
			<i>Operation and Control</i>	<i>Information Ordering</i>
E6	CORE	Supervise installation of aircraft crash dollies (F/A-18, EA-6B, E-2C, etc.)	<i>Monitoring</i>	<i>Originality</i>
			<i>Operation Monitoring</i>	<i>Visualization</i>
E6	CORE	Supervise installation of hoisting equipment (F/A-18, EA-6B, E-2C, etc.)	<i>Monitoring</i>	<i>Originality</i>
			<i>Operation Monitoring</i>	<i>Visualization</i>
E6	CORE	Supervise operation of aircraft crash cranes	<i>Monitoring</i>	<i>Originality</i>
			<i>Operation Monitoring</i>	<i>Visualization</i>
E6	CORE	Supervise positioning of crash forklifts for rescues	<i>Monitoring</i>	<i>Originality</i>
			<i>Operation Monitoring</i>	<i>Visualization</i>
E6	CORE	Supervise salvage operations for helo/aircraft in the water	<i>Monitoring</i>	<i>Originality</i>
			<i>Operation Monitoring</i>	<i>Visualization</i>
E7	CORE	Supervise salvage operations with composite material aircraft	<i>Monitoring</i>	<i>Originality</i>
			<i>Operation Monitoring</i>	<i>Visualization</i>
E6	CORE	Supervise securing of aircraft crash dollies (F/A-18, EA-6B, E-2C, etc.)	<i>Monitoring</i>	<i>Originality</i>
			<i>Operation Monitoring</i>	<i>Visualization</i>
E7	CORE	Tow aircraft on crash dollies	<i>Coordination</i>	<i>Information Ordering</i>
			<i>Judgment and Decision Making</i>	<i>Multi-limb Coordination</i>

SHIPBOARD/SHORE STATION AIRCRAFT HANDLING

<u>Pavgrade</u>	<u>Task Type</u>	<u>Task Statements</u>	<u>Skills</u>	<u>Abilities</u>
E4	CORE	Attach tow bars from tractors	<i>Coordination</i> <i>Installation</i>	<i>Static Strength</i> <i>Multi-limb Coordination</i>
E5	CORE	Conduct Air Department Training Team (ADTT) procedures	<i>Instructing</i> <i>Monitoring</i>	<i>Information Ordering</i> <i>Inductive Reasoning</i>
E5	CORE	Conduct flight deck safety training	<i>Instructing</i> <i>Learning Strategies</i>	<i>Oral Expression</i> <i>Speech Clarity</i>
E4	CORE	Conduct flight deck salvage procedures	<i>Coordination</i> <i>Management of Personnel Resources</i>	<i>Information Ordering</i> <i>Multi-limb Coordination</i>
E5	CORE	Conduct hangar deck safety training	<i>Instructing</i> <i>Learning Strategies</i>	<i>Oral Expression</i> <i>Speech Clarity</i>
E4	CORE	Execute fuel station fire drills (flight deck, hangar deck)	<i>Active Listening</i> <i>Judgment and Decision Making</i>	<i>Multi-limb Coordination</i> <i>Information Ordering</i>
E4	CORE	Identify primary mooring points (F/A-18, EA-6B, E-2C, etc.)	<i>Equipment Selection</i> <i>Judgment and Decision Making</i>	<i>Memorization</i> <i>Information Ordering</i>
E4	CORE	Install aircraft chains (F/A-18, EA-6B, E-2C, etc.)	<i>Equipment Selection</i> <i>Installation</i>	<i>Multi-limb Coordination</i> <i>Manual Dexterity</i>
E4	CORE	Install aircraft chocks (F/A-18, EA-6B, E-2C, etc.)	<i>Equipment Selection</i> <i>Installation</i>	<i>Multi-limb Coordination</i> <i>Manual Dexterity</i>
E4	CORE	Install aircraft tow bars (F/A-18, EA-6B, E-2C, etc.)	<i>Equipment Selection</i> <i>Installation</i>	<i>Multi-limb Coordination</i> <i>Manual Dexterity</i>
E4	CORE	Install barricade ramps	<i>Coordination</i> <i>Installation</i>	<i>Multi-limb Coordination</i> <i>Manual Dexterity</i>
E4	CORE	Interpret audio signals (flight deck, hangar deck)	<i>Complex Problem Solving</i> <i>Judgment and Decision Making</i>	<i>Sound Localization</i> <i>Oral Comprehension</i>
E4	CORE	Interpret visual signals (flight deck, hangar deck)	<i>Complex Problem Solving</i> <i>Judgment and Decision Making</i>	<i>Response Orientation</i> <i>Memorization</i>
E4	CORE	Operate mobile support equipment	<i>Judgment and Decision Making</i> <i>Operation and Control</i>	<i>Multi-limb Coordination</i> <i>Manual Dexterity</i>
E4	CORE	Perform aircraft hydraulic failure emergency procedures	<i>Complex Problem Solving</i> <i>Judgment and Decision Making</i>	<i>Deductive Reasoning</i> <i>Visualization</i>
E4	CORE	Release tow bars from tractors	<i>Coordination</i> <i>Judgment and Decision Making</i>	<i>Deductive Reasoning</i> <i>Dynamic Flexibility</i>
E4	CORE	Remove barricade ramps	<i>Equipment Selection</i> <i>Judgment and Decision Making</i>	<i>Information Ordering</i> <i>Dynamic Flexibility</i>
E4	CORE	Respond to audio signals (flight deck, hanger deck)	<i>Complex Problem Solving</i> <i>Judgment and Decision Making</i>	<i>Auditory Attention</i> <i>Deductive Reasoning</i>

E4	CORE	Respond to visual signals (flight deck, hangar deck)	<i>Complex Problem Solving</i> <i>Judgment and Decision Making</i>	<i>Auditory Attention</i> <i>Deductive Reasoning</i>
E5	CORE	Rig aircraft jettison stations	<i>Complex Problem Solving</i> <i>Judgment and Decision Making</i>	<i>Multi-limb Coordination</i> <i>Static Strength</i>
E4	CORE	Stow barricade ramps	<i>Equipment Selection</i> <i>Judgment and Decision Making</i>	<i>Static Strength</i> <i>Multi-limb Coordination</i>
E7	CORE	Supervise flight deck operations	<i>Monitoring</i> <i>Operation Monitoring</i>	<i>Originality</i> <i>Visualization</i>

SHIPBOARD/SHORE STATIONS MAINTENANCE

<u>Paygrade</u>	<u>Task Type</u>	<u>Task Statements</u>	<u>Skills</u>	<u>Abilities</u>
E5	CORE	Input Organizational Maintenance and Material System - New Generation (OMMS-NG) action work	<i>Equipment Maintenance</i> <i>Judgment and Decision Making</i>	<i>Finger Dexterity</i> <i>Memorization</i>

Job Title**Air Operations Technician****Job Code****001555****Job Family**

Transportation and Material Moving

NOC

5300-2022.00

Short Title (30 Characters)

AIR OPERATIONS TECHNICIAN

Short Title (10 Characters)

AIR OP TEC

Pay Plan

Enlisted

Career Field

ABH

Proficiency Level

J/M

Other Relationships and Rules:

7012

Job Description

Air Operations Technicians ensure the safe operation of air fields and provide assistance to transient aircraft and aircrew personnel. Duties include aircraft movement, load priorities, and the servicing and maintenance of transiting aircraft. Duties also include the security and custody of cargo, mail, and hazardous materials, ensuring these items are properly packaged and palletized for aircraft. They serve as firefighters, and are responsible for all firefighting and rescue operations at the immediate scene of aircraft/structural buildings on shore facilities.

DoD Relationship**Title and Group:**Aircraft Launch Equipment
160**Code and Area:**160400
16**O*NET Relationship****Title and SOC Code:**Airfield Operations Specialists
53-2022.00**Name and Family Code:**Transportation and Material Moving
53**AIRCRAFT FIREFIGHTING/CRASH AND SALVAGE****Paygrade**

E7

Task Type

CORE

Task Statements

Conduct fire chief procedures during airfield aircraft emergency operations

SkillsComplex Problem Solving
Coordination**Abilities**Auditory Attention
Deductive Reasoning**SHIPBOARD/SHORE STATION AIRCRAFT HANDLING****Paygrade**

E5

Task Type

CORE

Task Statements

Conduct airfield operations safety training

SkillsCritical Thinking
Instructing**Abilities**Information Ordering
Inductive Reasoning

E4

CORE

Operate mobile support equipment

Judgment and Decision Making
Operation and ControlMulti-limb Coordination
Manual Dexterity

E4

CORE

Perform airfield support operations

Coordination
Judgment and Decision MakingDeductive Reasoning
Visualization**SHIPBOARD/SHORE STATIONS MAINTENANCE****Paygrade**

E5

Task Type

CORE

Task Statements

Conduct E-28 arresting gear journal inspections

SkillsMonitoring
Quality Control Analysis**Abilities**Written Expression
Written Comprehension

E4

CORE

Conduct E-28 arresting gear post-operational inspections

Equipment Maintenance
Quality Control AnalysisInformation Ordering
Written Comprehension

E4

CORE

Conduct E-28 arresting gear pre-operational inspections

Equipment Maintenance
Operation MonitoringInformation Ordering
Written Comprehension

E4

CORE

Conduct E-28 engine start-up and shutdown procedures

Equipment Maintenance
Operation and ControlInformation Ordering
Written Comprehension

E4

CORE

Maintain Manually Operated Visual Landing Aid Systems (MOVLAS)

Equipment Maintenance
Management of Material ResourcesWritten Comprehension
Visualization

E4

CORE

Maintain shore based arresting gear

Equipment Maintenance
Management of Material ResourcesWritten Comprehension
Visualization

AB-17(H)